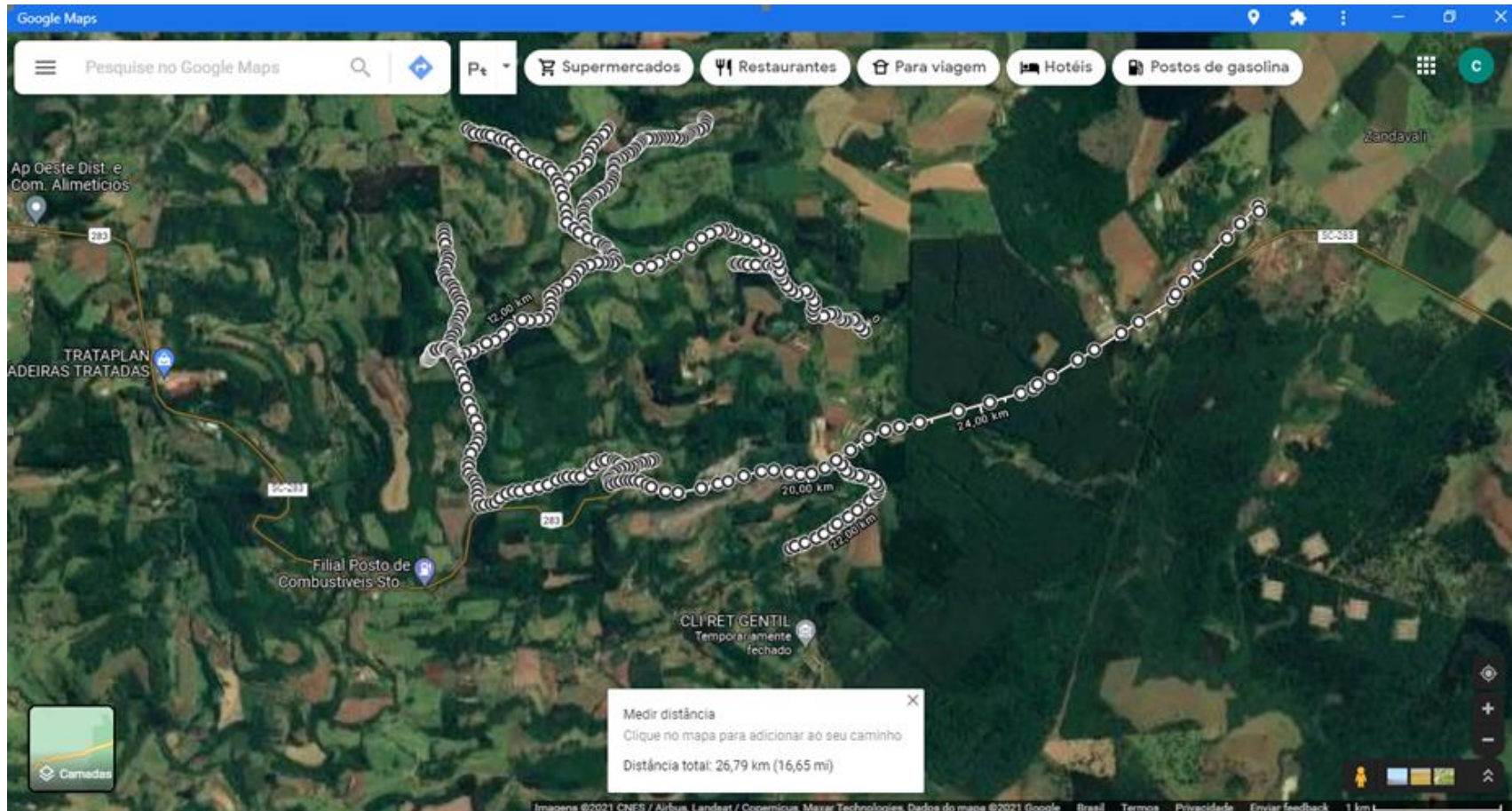




# ESTADO DE SANTA CATARINA MUNICÍPIO DE GUATAMBU

Linha 09 (Gramado dos Rosas) manhã 06:00hrs:

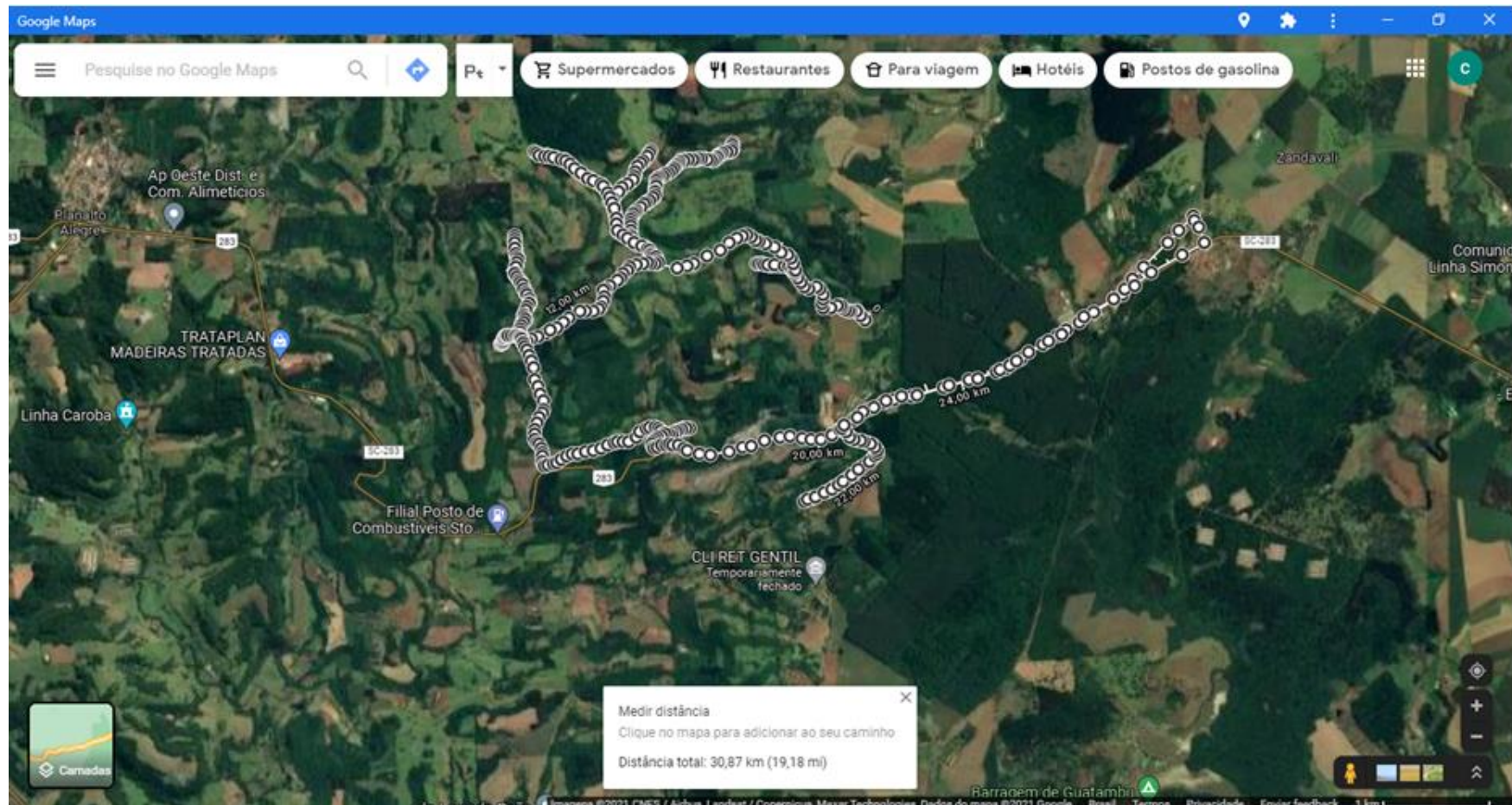


Rua Manoel Rolim de Moura, 825, Centro, Guatambu SC – CEP: 89.817-000  
E-mail: [licitacao@guatambu.sc.gov.br](mailto:licitacao@guatambu.sc.gov.br) | Site: [www.guatambu.sc.gov.br](http://www.guatambu.sc.gov.br) | Fone/Fax: (49) 3336-0102



# ESTADO DE SANTA CATARINA MUNICÍPIO DE GUATAMBU

Linha 09 (Gramado dos Rosas) 11:30hrs:

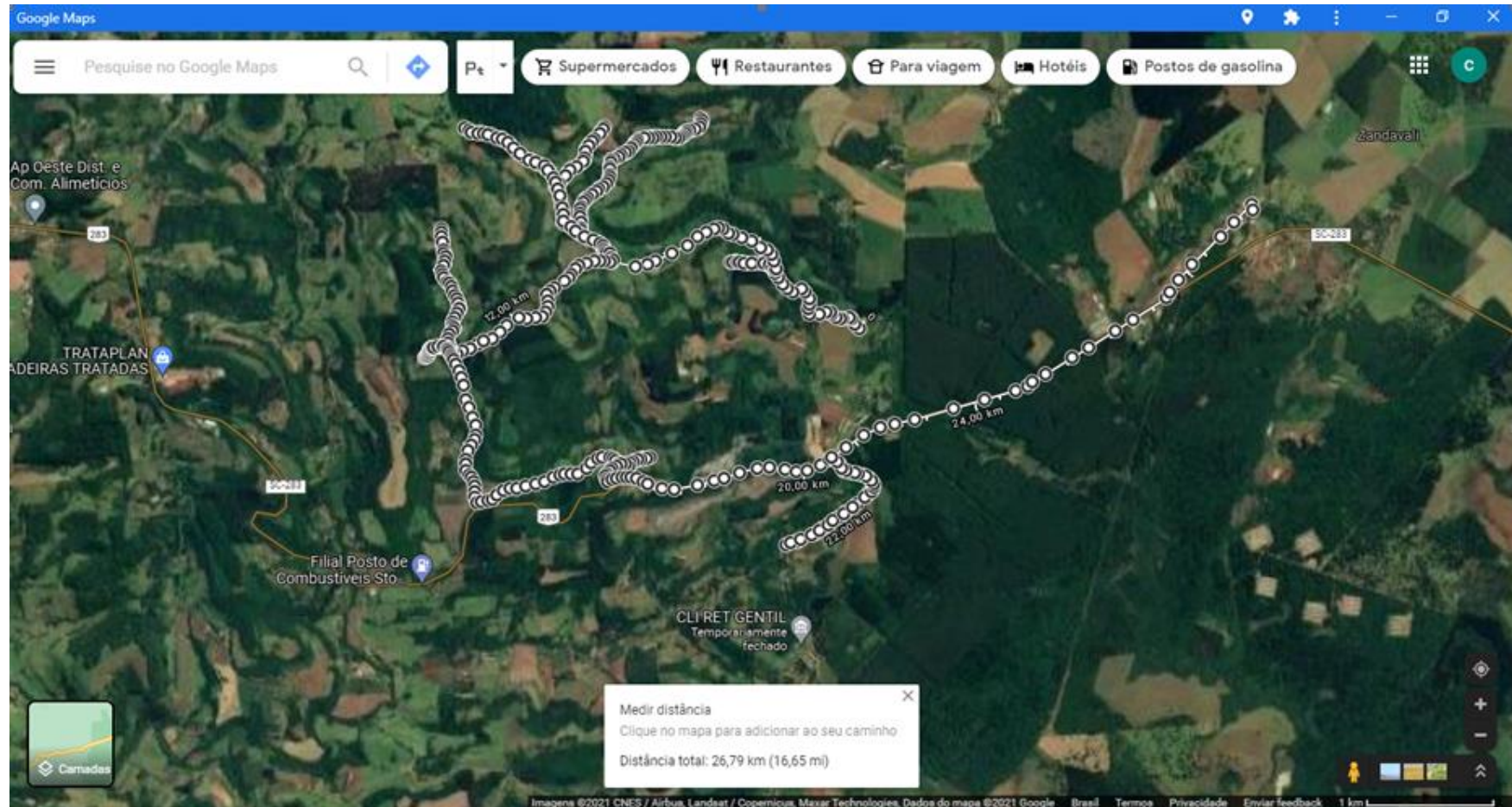


Rua Manoel Rolim de Moura, 825, Centro, Guatambu SC – CEP: 89.817-000  
E-mail: [licitacao@guatambu.sc.gov.br](mailto:licitacao@guatambu.sc.gov.br) | Site: [www.guatambu.sc.gov.br](http://www.guatambu.sc.gov.br) | Fone/Fax: (49) 3336-0102



# ESTADO DE SANTA CATARINA MUNICÍPIO DE GUATAMBU

Linha 09 (Gramado dos Rosas) 17:00hrs:



Rua Manoel Rolim de Moura, 825, Centro, Guatambu SC – CEP: 89.817-000  
E-mail: [licitacao@guatambu.sc.gov.br](mailto:licitacao@guatambu.sc.gov.br) | Site: [www.guatambu.sc.gov.br](http://www.guatambu.sc.gov.br) | Fone/Fax: (49) 3336-0102