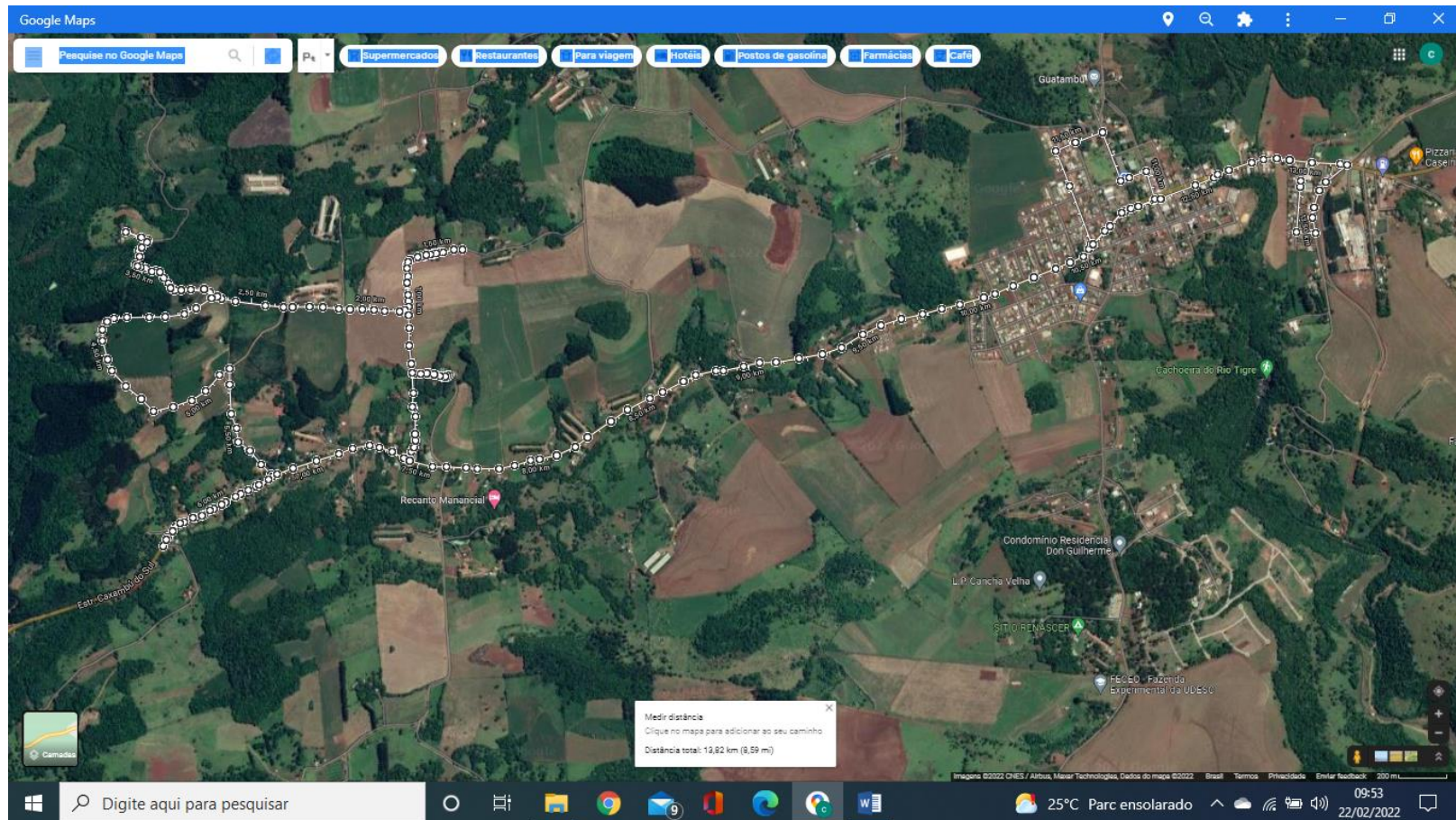




ESTADO DE SANTA CATARINA MUNICÍPIO DE GUATAMBU

Linha 06 (Flor) manhã 6:00hrs:

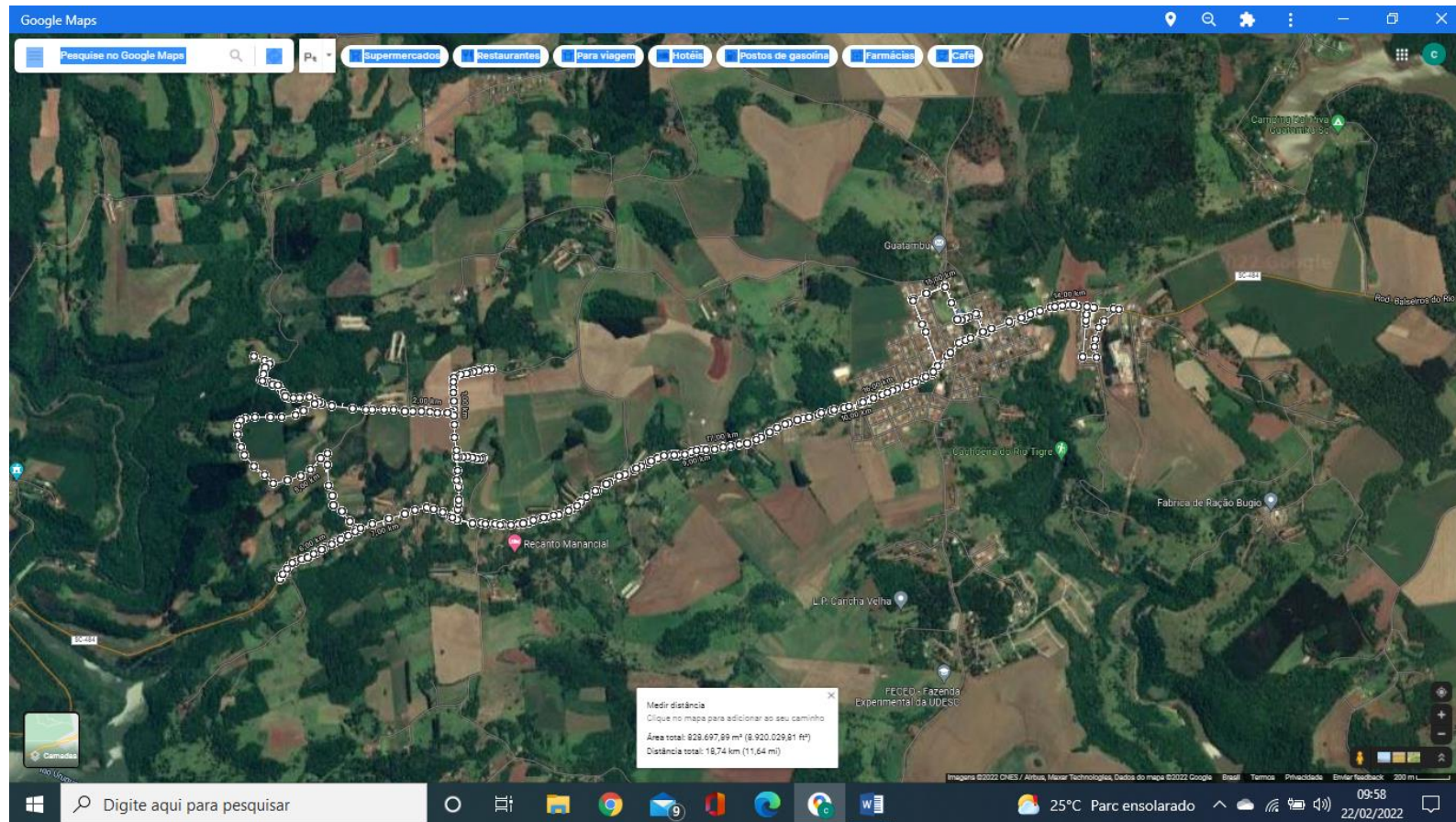


Rua Manoel Rolim de Moura, 825, Centro, Guatambu SC – CEP: 89.817-000
E-mail: licitacao@guatambu.sc.gov.br | Site: www.guatambu.sc.gov.br | Fone/Fax: (49) 3336-0102



ESTADO DE SANTA CATARINA MUNICÍPIO DE GUATAMBU

Linha 06 (Flor) 13:00hrs:

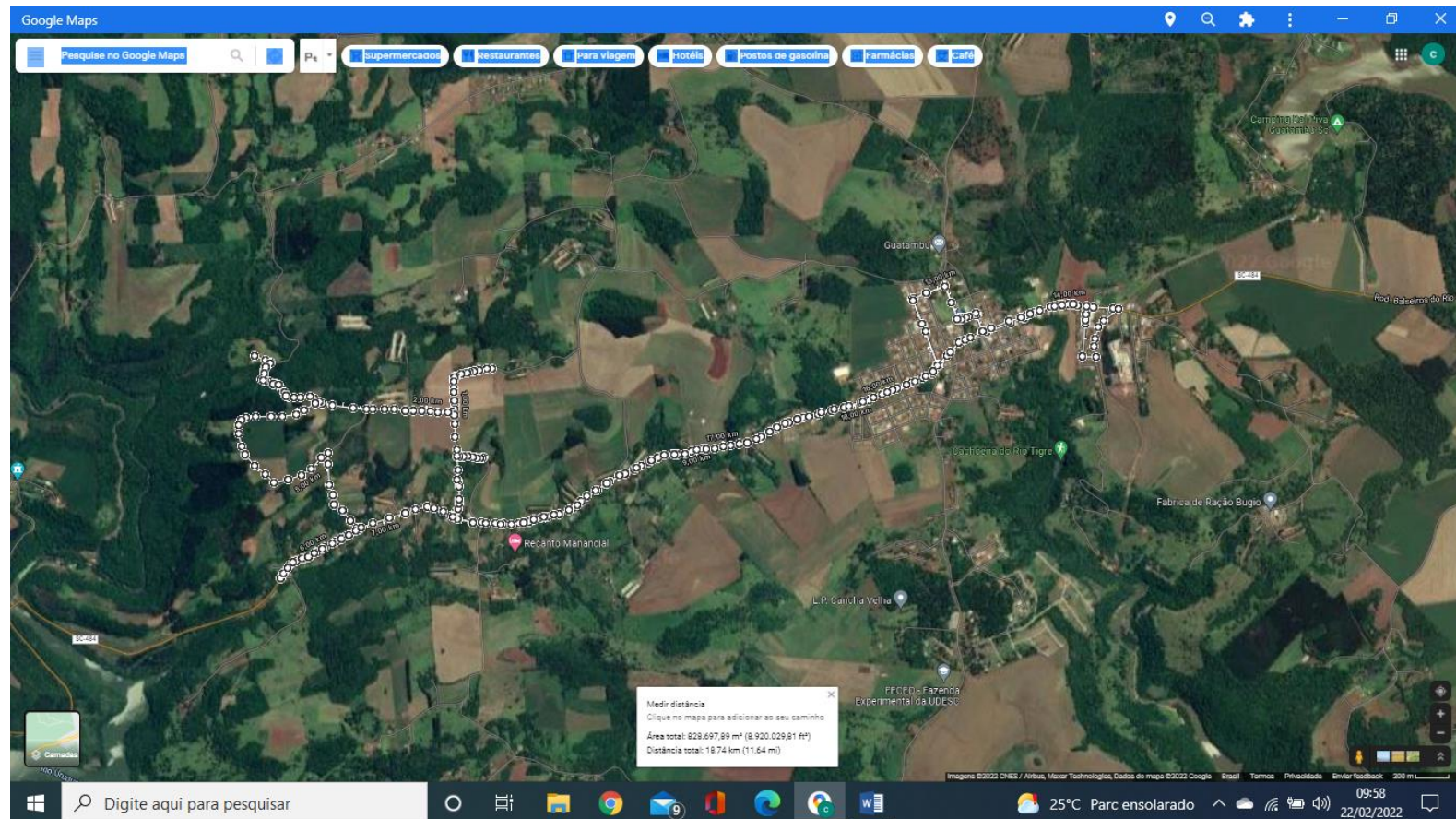


Rua Manoel Rolim de Moura, 825, Centro, Guatambu SC – CEP: 89.817-000
E-mail: licitacao@guatambu.sc.gov.br | Site: www.guatambu.sc.gov.br | Fone/Fax: (49) 3336-0102



ESTADO DE SANTA CATARINA MUNICÍPIO DE GUATAMBU

Linha 06 (Flor) 17:00hrs:

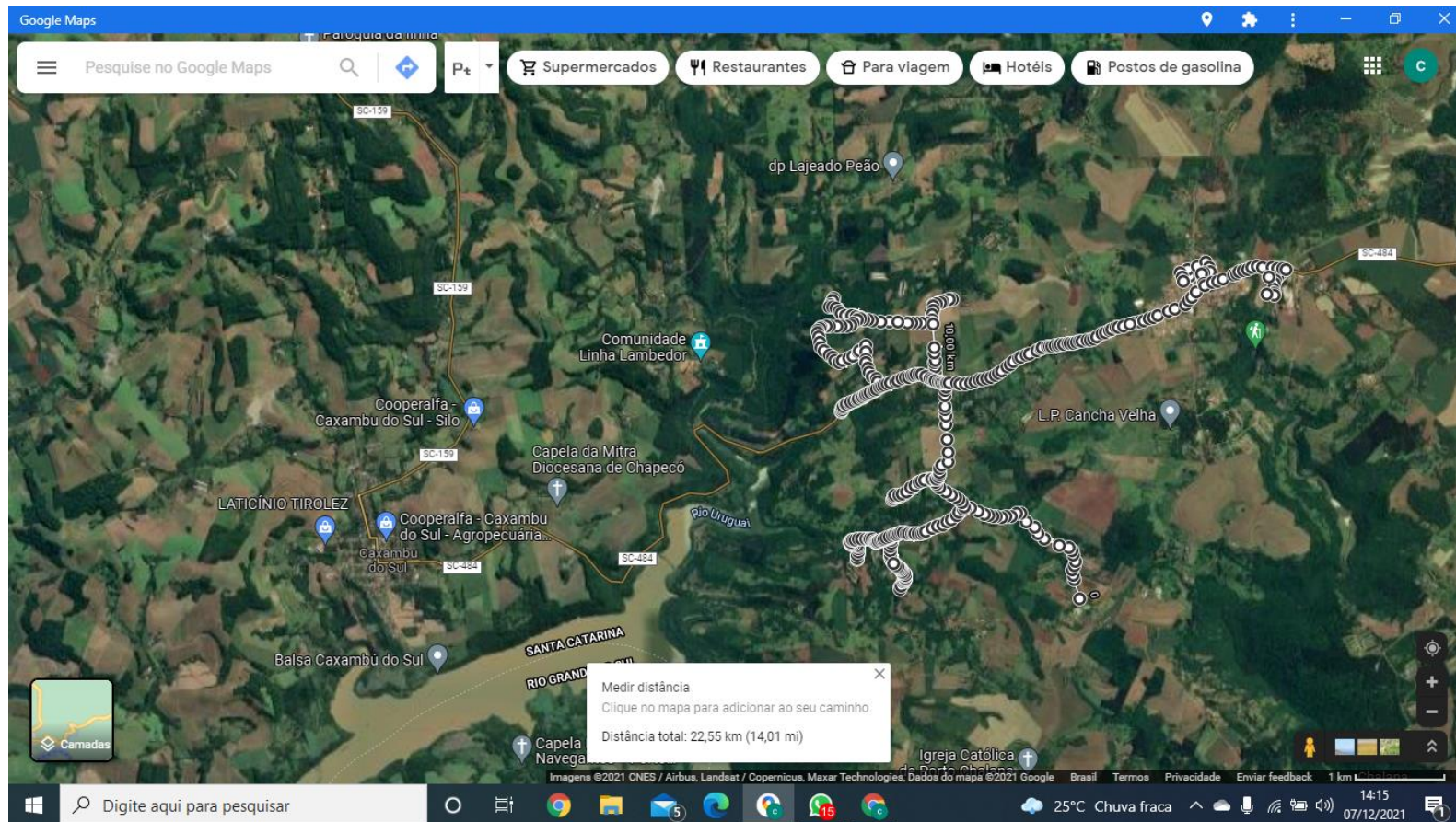


Rua Manoel Rolim de Moura, 825, Centro, Guatambu SC – CEP: 89.817-000
E-mail: licitacao@guatambu.sc.gov.br | Site: www.guatambu.sc.gov.br | Fone/Fax: (49) 3336-0102



ESTADO DE SANTA CATARINA MUNICÍPIO DE GUATAMBU

Linha 06 (Flor) 22:00hrs:



Rua Manoel Rolim de Moura, 825, Centro, Guatambu SC – CEP: 89.817-000
E-mail: licitacao@guatambu.sc.gov.br | Site: www.guatambu.sc.gov.br | Fone/Fax: (49) 3336-0102